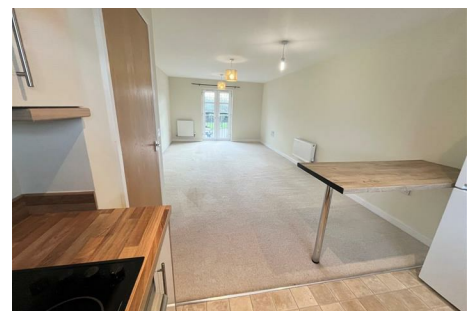




# GREENDOOR PROPERTY



## 61 Bowyer Drive , Letchworth Garden City, SG6 1FX

A well presented spacious two bedroom, two bathroom second floor flat with a bright large main reception. The master bedroom has a 'Juliette balcony' as well as en-suite shower room. Outside, the block is set in communal grounds and this flat benefits from a covered parking space. The landlord may consider pets for additional rent.

Gas central heating and all mains services.

Note this is a 2nd floor flat with no lift available.

Available now on a long term basis. Council Tax Band C

We are an ARLA PropertyMark agent and belong to their Client Money Protection Scheme, we are also members of The Property Ombudsman (TPO) redress scheme.

**£1,425 Per month**

# 61 Bowyer Drive

, Letchworth Garden City, SG6 1FX



- Double Glazed windows
- Council Tax Band C
- Two bathrooms (including one en-suite)
- Gas central heating
- Mains Services
- Walking distance to Train station/ Town centre
- Juliette balcony in reception and master bedroom
- Covered allocated parking space

## Reception/kitchen

27'10" x 11'9" (8.5m x 3.6m)

## Masterbedroom

9'6" x 10'9" (2.9m x 3.3m)

## Ensuite

4'3" x 3'11" (1.3m x 1.2m)

## Family Bathroom

7'6" x 5'6" (2.3m x 1.7m)

## Bedroom Two

8'2" x 11'1" (2.5m x 3.4m)

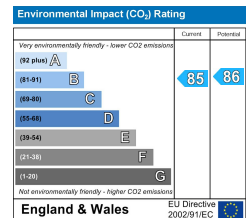
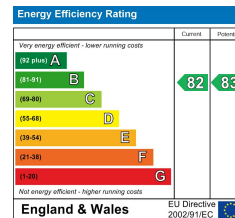


[Directions](#)



# Floor Plan

Every care has been taken with the preparation of these particulars, but complete accuracy cannot be guaranteed. If there is any point, which is of particular importance to you, please obtain professional confirmation. Alternatively, we will be pleased to check the information for you. These Particulars do not constitute a contract or part of a contract. All measurements quoted are approximate. The Fixtures, Fittings & Appliances have not been tested and therefore no guarantee can be given that they are in working order. Photographs are reproduced for general information and it cannot be inferred that any item shown is included in the sale.



  
**Green Door**  
 3 Maiden Street  
 Weston  
 Hitchin Hertfordshire,  
 SG4 7DG  
[info@greendoorpm.co.uk](mailto:info@greendoorpm.co.uk)  
 call 01462 510765  
[www.greendoorpm.co.uk](http://www.greendoorpm.co.uk)

